



GALAXY

MEDICAL (A DIVISION OF GALAXY ENTERPRISES INC.)



ADJUSTMENT TABLE WITH DROPS	1
CHIROPRACTIC TABLE	2
CHIROPRACTIC ADJUSTABLE TABLES	3
CHIROPRACTIC ADJUSTABLE TABLES (ECONOMY MODELS)	4
REHAB TABLES	5
TREATMENT TABLES	6
MAT TABLE, TREATMENT TABLE AND PEDIATRIC TABLE	7
TREATMENT TABLES	8 / 9
RECOVERY COUCHES	10
PORTABLE MASSAGE TABLES	11
PORTABLE ADJUSTMENT TABLE / CHAIR	12
RECEPTION CHAIRS	13
TABLE ACCESSORIES	14
ACCESSORIES	15
BARIATRIC TREATMENT TABLES	16
SWIVEL, PNEUMATIC CYLINDER DOCTOR STOOLS	17
PNEUMATIC CYLINDER DOCTOR STOOLS	18
SPINE ANALYZER	19
EXAMINATION ROOMS CABINETS	20 / 21
SKIN CARE EQUIPMENT	22 / 23
COLOR SELECTIONS	24



MEDICAL (A DIVISION OF GALAXY ENTERPRISES INC.)

5411 Sheila Street,
 Los Angeles, CA 90040
 (323) 728-3980 (800) 876-4599
 Fax (323) 728-5971
sales@galaxymfg.com

ADJUSTMENT TABLE WITH DROPS



MODEL 1999-CA ADJUSTMENT TABLE WITH DROPS

- Articulating Head Piece
- 3" Hi density foam
- 22"W x 22"H x 72"L
- Drop Pelvic
- Drop Thoracic
- Armrest & Paper Holder
- Metal Paper Cutter
- Hardwood legs
- Available in Different Heights
- Available in Different Colors
- Two years limited warranty



MADE IN USA



CHIROPRACTIC TABLE



MODEL: 1996-CA ADJUSTABLE TABLE

- Maximum tilting position
- Heavy duty construction
- Standard padded armrest
- Metal paper holder & cutter
- Modern design
- 2" Hi density foam
- 23"W x 22"H x 72"L
- Adjustable height from 22" to 28"
- Available in different vinyl colors
- Two years limited warranty

CHIROPRACTIC ADJUSTABLE TABLES

MODEL: 1989-CA ADJUSTABLE TABLE W/ARM REST

- Articulating Head Piece
- 3" Hi density foam,
- 22"W x 22"H x 72"L
- metal paper cutter
- Customized paper holders
- Comfortable arm rest
- Available in different heights
- Available in different vinyl colors
- Two years limited warranty



MODEL: 1989-CF ADJUSTABLE TABLE W/ARM REST

- 2" Hi density foam
- 22"W x 22"H x 72"L
- metal paper cutter
- Customized paper holders
- Comfortable arm rest
- Available in different heights
- Available in different vinyl colors
- Two years limited warranty



MADE IN USA



CHIROPRACTIC ADJUSTABLE TABLES (ECONOMY MODELS)



MODEL: 1994-CF ADJUSTABLE TABLE W/ARM REST

- 2" Hi density foam
- metal paper cutter
- chrome legs
- 21 1/2" W x 22"H x 69"L
- Available in different vinyl colors
- UPS Shipping
- Comfortable armrest
- Two years limited warranty



MODEL: 1993-CF ADJUSTABLE TABLE

- 2" Hi density foam
- metal paper cutter
- chrome legs
- Available in different vinyl colors
- 21 1/2" W x 22"H x 69"L
- UPS Shipping
- Two years limited warranty

MODEL: 1987-30 STANDARD TABLE WITH CHROME LEGS

- 2"Hi density foam
- Chrome metal legs
- 30"W x 31"H x 72"L
- Available in 24"W, 27"W, or 30"W
- Available in different vinyl colors
- Paper cutter and paper holder are standard
- Two years limited warranty



MODEL: 1987-30 STANDARD TABLE WITH WOOD LEGS

- All wood
- 2"Hi density foam
- 30"W x 72"L x 31"H
- Available in 24", 27" or 30" widths
- Shown with optional face slot
- Paper cutter and paper holder are standard features with 1987-30 models
- Available in different vinyl colors
- Two years limited warranty



TREATMENT TABLES



MODEL: 1989-30 STANDARD TABLE

- All wood
- 2" Hi density foam
- 30"W x 72"L x 31"H
- Available in 24", 27" or 30" widths
- Shown with optional face slot
- Paper cutter and paper holder are standard features with 1989-30 models
- Two years limited warranty



MODEL: 1989-30-H

- Shown with optional H-Brace
- 1989-30 Series are available in different heights and different widths
- Available in different Vinyl color
- Two years limited warranty



MODEL: 1989-30-SHELF

- Optional Wooden Shelf as shown in the picture
- Available in different widths
- Available in different heights
- Available in different vinyl colors
- Two years limited warranty

TREATMENT TABLE, MAT TABLE AND PEDIATRIC TABLE

MODEL: 1093 TREATMENT TABLE

- With double door cabinet and 3 drawers
- 24"W x 72"L x 31"H
- Available in 27" or 30" widths
- Standard Paper holder & Paper cutter
- Two years limited warranty



MODEL: 1995 MAT TABLE

- 2" Hi density foam mat table
- All wood
- Available in many customized sizes
- Size shown is 60"W x 84"L x 18"H
- Available in 18" or 22" H
- Available 48"W x 72"L x 18"H
- Available 72"W x 96"L x 18"H
- Two years limited warranty



MODEL: 4093 PEDIATRIC TABLE

- 2"Hi density pediatric table
- All wood
- 24"W x 48"L x 36"H
- Two years limited warranty



All of the above products are available in different vinyl selections

MADE IN USA



TREATMENT TABLES



MODEL: 2093-27TB TREATMENT TABLE

- 3 cabinets and shelf inside of cabinet
- Tilting adjustable head piece
- Standard Paper cutter & Paper holder
- 27"W x 72"L x 31"H
- Also available in 24" or 30" widths
- Two years limited warranty



MODEL: 2094-27TB TREATMENT TABLE W/ DRAWERS

- With 3 drawers
- 27"W x 72"L x 31"H
- Tilting adjustable head piece
- Available in 24" or 30" widths
- Standard Paper cutter & Paper holder
- Two years limited warranty

All of the above products are available in different vinyl selections



MADE IN USA



MODEL: 1989-27TB TREATMENT TABLE

- Tilting adjustable back
- All wood
- 2"hi density foam
- 27"W x 72"L x 31"H
- Available in 24", 27" or 30" widths
- Available in different height
- Face slot, shelf are optional as shown in picture
- Available in different vinyl colors
- Two years limited warranty

MODEL: 5093-27TB ADJUSTABLE HEIGHT TABLE

- All wood
- 2"hi density foam
- 27"W x 72"L x 31"H
- Adjustable back
- Available in 24", 27" or 30" widths
- Height adjustment from 27" to 33"H
- Regular face cradle is standard with this model
- Available in different vinyl colors
- Face slot, shelf is optional
- Two years limited warranty



RECOVERY COUCHES



MODEL: 1990-27" CHROME

- Built in raised pillow with 2" Hi density foam
- chrome legs
- 27"W x 72"L x 31"H
- Available in different heights
- Available in 24" or 30" widths
- Available in different vinyl colors
- Two years limited warranty



MODEL: 2050-27" TB

- Upholstered coach
- 4" Hi density foam
- Tilting headrest
- Double storage drawers
- Heavy duty, 500 Lbs Capacity
- Available in different laminate and vinyl colors
- Available in 24", 27" or 30" widths
- 27"W x 72"L x 22"H is shown in the picture
- Two years limited warranty

PORTABLE MASSAGE TABLES



MODEL: 1992M PORTABLE MASSAGE TABLE

- Hard maple wood
- Easily hold a heavy person
- Available in different vinyl colors
- Light weight
- Adjustable height from 23" to 33"
- Size 27"W to 69"L
- Available carrying case
- UPS shipping
- Available in different widths
- Available in different vinyl colors
- Two years limited warranty



MODEL: GA-9615

- Portable massage table
- Heavy duty aluminum legs
- Braces for additional support
- 2" Hi density foam
- Selected vinyl upholstery
- 24"W x 72"L x 30"H
- Folds down to 24" x 36"
- Optional carrying case
- UPS shipping
- Two years limited warranty

MADE IN USA



PORTABLE ADJUSTMENT TABLE / CHAIR



MODEL: 1900-C PORTABLE ADJUSTABLE BENCH

- Hi-Quality aluminum legs
- Heavy duty plywood top
- 2½" Hi density foam
- light weight (only 20 lbs)
- 67½"L x 16"W x 20½"H
- Great for traveling and household use
- Optional carrying case available
- UPS shipping
- Available in different vinyl colors
- Two years limited warranty

MADE IN USA



MODEL: 2000M

- Portable massage chair is
- Easy to set up
- Light weight
- One piece integrated design
- Different adjustments.
- Comfortable chest cushion.
- Multiposition,
- Adjustable head piece
- Available in black vinyl color only
- Optional carrying case available
- UPS shipping



MODEL: REC P-20

- Hardwood frame construction
- High-grade vinyl selection make this unit a quality buy
- Available in different vinyl colors

MADE IN USA



MODEL: REC P-95

- Features sturdy arms
- Black metal tube construction
- Molded vinyl seat and curved back
- Available in different vinyl colors



MODEL: REC W-600

- Black frame with arms
- Available in different vinyl colors

TABLE ACCESSORIES



All of the above products are available in different vinyl selections

PL-1 Regular Pillow (14" x 16")

PL-2 Flexlon Pillow (7" x 18" x 26")

DR Round Foot (19.5" x 7" Dia.)
Dutchman's Roll

SR Sternal Roll (10.5" x 4.5" Dia.)

SB Pelvic Sacral Block

SBR Rubber Pelvic Sacral Blocks w/Rubber Mat

FPO Portable Face Plates (Open bottom face plates
11.5" x 10.5" x 3")

BB Block Board (20" x 16" x 1½")

FPC Portable Face Plate (Solid bottom face plates
9" x 7" x 3")



MADE IN USA



2002-X SPORT
16" x 20" W & 22" Diameter Base

M-900 Mayo table with Stainless Steel Tray (12 1/2" x 19")
Adjustable height from 32" to 52"H

IV-10 IV stand, Adjustable height

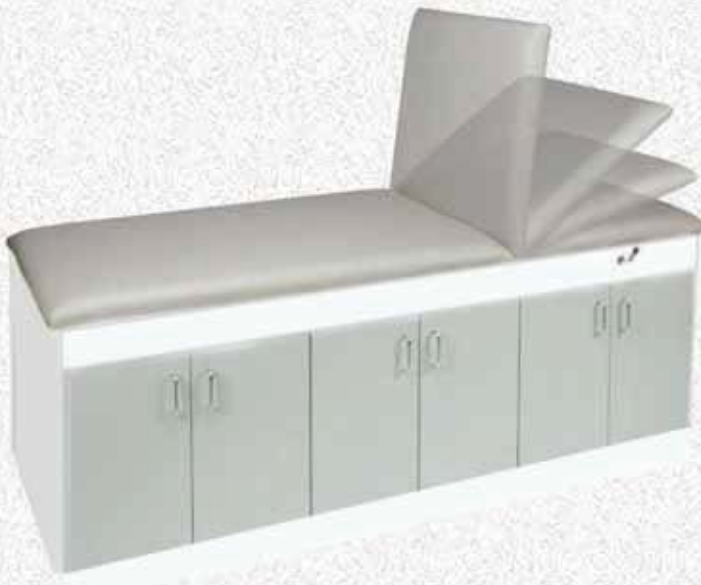
3900 Examining Lamp, Adjustable height

ST-1 Standard Step Stool, 9"H x 14"L x 11 1/4"W

ST-2 Step Stool w/Hand Rail (25"H)

2002-X SPORT Extremity support X-Ray table, height adjustment from 19" to 30". This is a sturdy, Compact & mobile table that allows you to take extremity X-Rays without having the patient sit on floor or hold a cassette on their lap. The gas lift makes it versatile for both upper and lower extremities, changing the table height is as simple as lifting a lever. The X'Sport has an attractive and durable laminate finish with grid markings and non-slip compound to help position the cassette 16" x 20"W and 22" DIA. BASE

BARIATRIC TREATMENT TABLES



MODEL: 2055 BAR

- Laminated Table
- Adjustable Backrest
- 2" Hi-density foam
- 3 large storage double doors with shelves
- Available in 24", 27" or 30"W
- 78"L x 30"W x 31"H is shown in the picture
- Available in different vinyl colors
- Available in different laminated colors
- 600 Lbs Capacity
- Two years limited warranty

MODEL: 2057-24" BAR

- Upholstered Top
- Flat top bariatric table
- 6 legs design with heavy duty metal corner brackets
- 2" Hi-density foam
- Available in 24", 27" or 30"W
- Available in 18", 24" or 31"H
- 72"L x 24"W x 24"H is shown in the picture
- Full length shelf w/ H- Brace available
- Available in different vinyl colors
- 500 Lbs Capacity
- Two years limited warranty



SWIVEL, PNEUMATIC CYLINDER DOCTOR STOOLS



MODEL: 1135

14 1/2"D x 3" thick HI resilient Foam

Doctors stool with swivel height, and round foot ring, adjustable 18" to 25"H
Two years limited warranty



MODEL: 1125

14 1/2"D x 3" thick HI resilient Foam

Doctors stool with swivel height, with square foot ring, adjustable 18" to 25"H
Two years limited warranty



MODEL: 1145

14 1/2"D x 3" thick HI resilient Foam

Doctors stool with 5 legs, with swivel height, adjustable from 18" to 25"H
Two years limited warranty



MODEL: 1150

Doctors stool with back support, anti fatigue design, helps keep pressure off your legs while working. w/ two way adjustable height and back tilt support, adjust from approximately 17" to 22"H.
Two years limited warranty



MODEL: 1151

Doctors stool without back support, adjustable from 17" to 22"H
Two years limited warranty



MODEL: 1080-G

14 1/4"D x 3" thick HI resilient Foam

Doctors stool with no back. Black base, with circular actuator. adjustment from approximate 17" to 22"H
Two years limited warranty

All of the above stools are available in different vinyl colors.

MADE IN USA



PNEUMATIC CYLINDER DOCTOR STOOLS

Deluxe chrome and Black cylinders high quality therapy stools with upholstered swivel seat which allows easy access to the patient or the equipment

MODEL: 1070G W/CHROME BASE



MODEL: 1070-G

Doctors stool 14½" dia. 3" thick foam with no back. adjusts from approximately 17" to 22"H, with black cylinder and black base. Two years limited warranty



Both models 1060-G and 1070-G stools are available with chrome cylinder and chrome base as an option. Two years limited warranty

- All of the stools are available in different vinyl colors.
- Hi-Resilient Foam



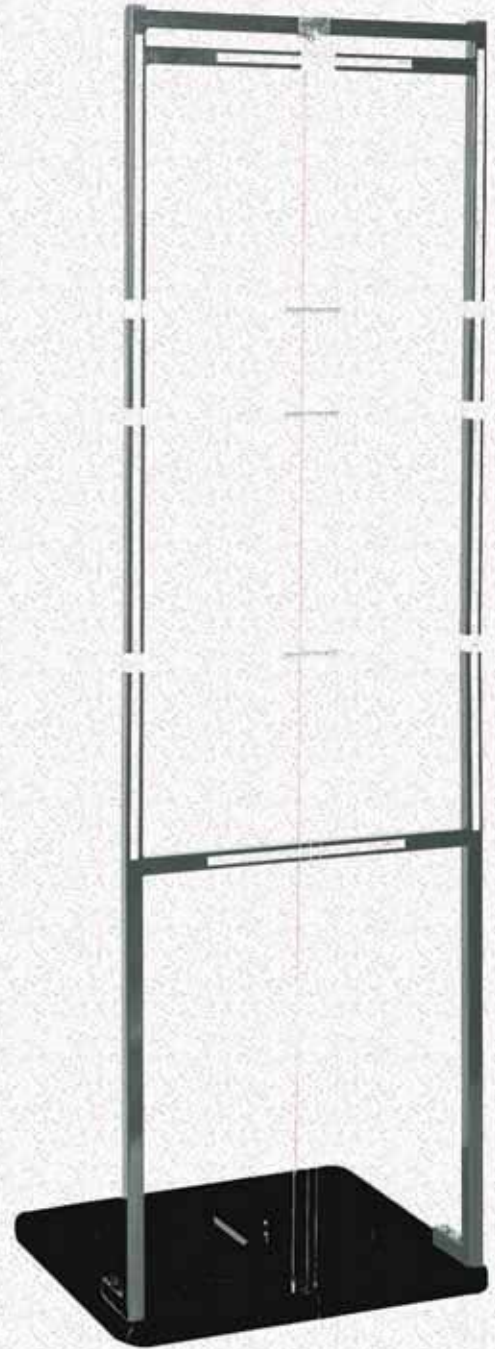
MODEL: 1060G W/CHROME BASE

MODEL: 1060-G

Doctors stool 14½" dia. 3" thick round seat with air lift and height adjustment from approximately 17" to 22"H, with comfortable back support and black base. Two years limited warranty



- Help the doctor to visualize and measure spinal and skeletal distortion.
- Help analyze the efficiency of treatment techniques.
- Precision calibration.
- Pivoting foot piece allows doctors to analyze patient from posterior, lateral, and interior view.
- Dimensions: 75½"H x 22¾"W x 21½"D, Weight 30 lbs.



EXAMINATION ROOMS CABINETS

MODEL: CAB 10000

Wall cabinet with 2 doors, adjustable shelf, 48"L x 12"D x 24" H
Two years limited warranty



MODEL: CAB 10001

Wall cabinet with 2 doors, Adjustable shelf, 36"L x 12"D x 24" H
Two years limited warranty



MODEL: CAB 10002

Base cabinet with 2 doors, 48"L x 20"D x 34"H
Wall mount drawer
Shown with optional sink and Waste drop hole
Two years limited warranty

All of these cabinets are available in different laminated colors and different sizes.



MODEL: CAB 10003

Base cabinet with 3 drawers, 36"L x 20"D x 34"H
1 large storage cabinet with inside shelf and one door
Shown with Waste drop hole as an option
Two years limited warranty

MODEL: CAB 10004

Base cabinet with 1 double door, with shelf inside. 4 drawers, 1 wall mount desk with one drawer. Shown with optional sink
72"L x 20"D x 34"H.
Two years limited warranty



All of these cabinets are available in different laminated colors and different sizes.

MODEL: CAB 10005

Base cabinet with 3 double doors and 3 drawers, Shown with optional sink and optional waste drop hole
72"L x 20"D x 34"H
Two years limited warranty





MODEL: 1215 ELECTRIC FACIAL BED

- Comfortable & versatile
- 3 electric motors
- Foot control
- Adjustable to flat and reclining positions
- Adjustable height
- Very comfortable
- Available in white only
- Adjust from 23 ½" to 31" H
- 21" inside dimension between arms
- 28" wide outside dimension including Arms
- 71" long including face cradle and leg extension



MODEL: 3939 HYDRAULIC FACIAL BED

- Attractive ergonomically designed
- Height adjustment from 25" to 31"
- Full back and leg adjustment
- Full 360 swivel makes this the most versatile facial bed you can use
- Available in white or black vinyl
- Size 24" inside dimension between arm
- 32" outside dimension including Arms
- 70½" long



MODEL: KT-7000

- Features:
- Brushing, Vacuum, Spray
- High frequency
- Steam with ozone
- Galvanic
- Wood's lamp
- 5-diaptor magnifying lamp
- Easy-roll stand



MODEL: KT-1000 FACIAL STEAMER

- Adjustable to any position & height
- Utilizes steam to moisten & cleanse the skin
- Totally portable on twin wheel caster base



MODEL: 1054 MAGNIFYING LAMP

- On easy-roll stand
- Adjustable arms
- Keeps subject illuminated
- 5x diaptor magnification



MODEL: KT-1013
Woods lamp
For proper skin inspection



MODEL: KT-1016
Small hot cabinet
Holds up to 12 towels
9½"H x 13"W x 11"D"



MODEL: KT-1036
With sterilizer
Holds up to 24 towels
11½"H x 18"W x 13"D"

COLOR SELECTIONS

VINYL COLORS



LAMINATED COLORS



WOOD COLORS

FOR TABLES
1987-30
1989-30



NATURAL



DARK



MADE IN USA



**California Prop 65
WARNING**

Our products can expose you to chemicals known to the State of California to cause cancer. For more information go to www.P65Warnings.ca.gov



MEDICAL(A DIVISION OF GALAXY ENTERPRISES INC.)

(800) 876-4599